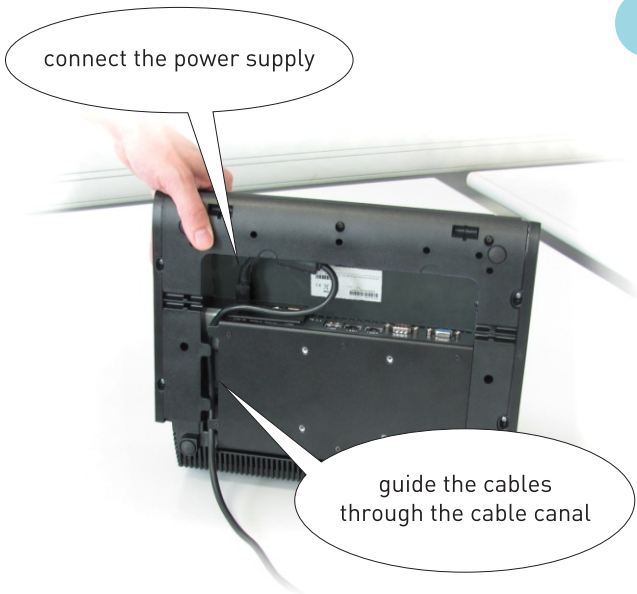


Getting Started with **BeFREE 10**



1

connect the power supply



guide the cables
through the cable canal

2

press the ON button



3

First install operating system.

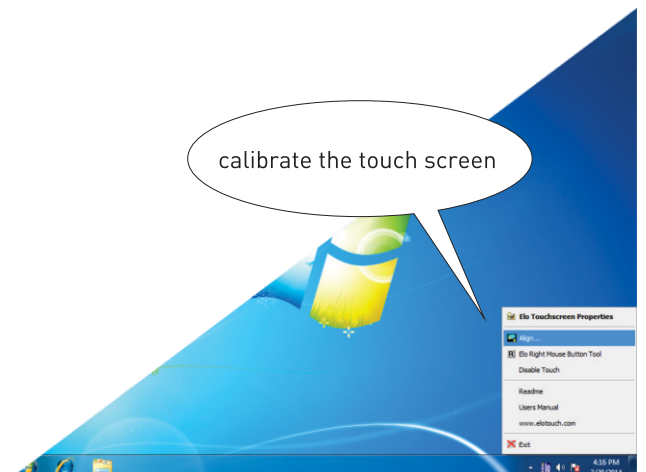
Then install drivers for BeFREE 10. You can find them on:

www.tipro.net → support & documents



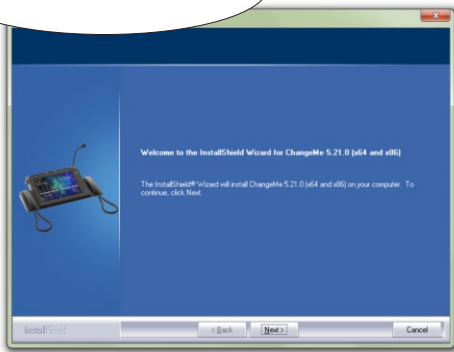
4

calibrate the touch screen



5

install ChangeMe

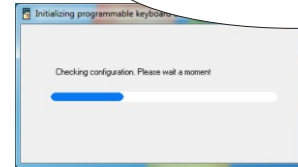


6

optionally run ChangeMe to change settings for each Tipro module



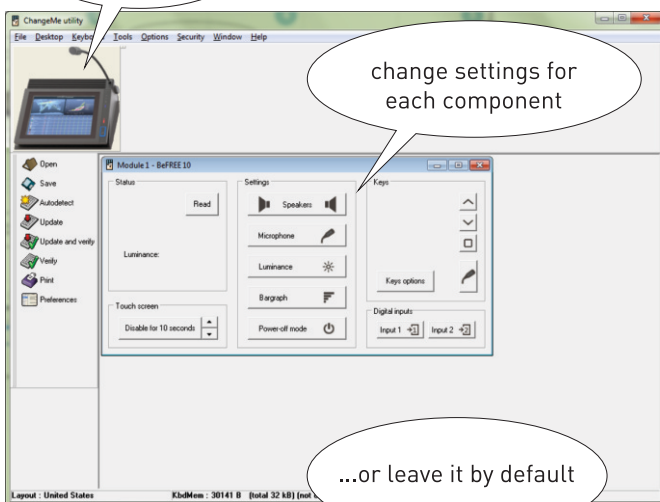
your configuration will be automatically detected



7

click on the module

change settings for each component

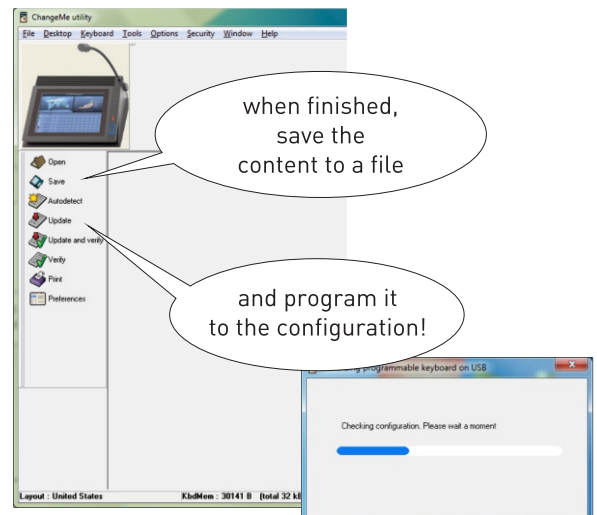


...or leave it by default

8

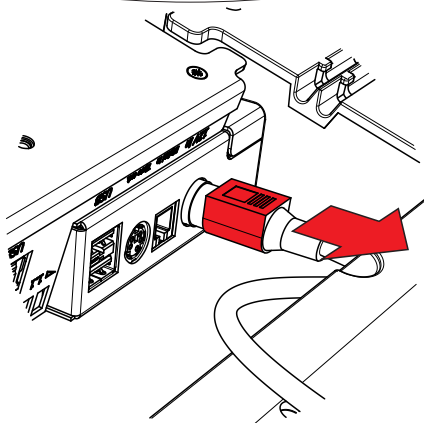
when finished, save the content to a file

and program it to the configuration!



9

when disconnecting the power supply pull the connector housing and not the cable, to unlatch the connector



⚠ WARNINGS

- Place the external power supply on a dry place with enough air circulation*.
- Do not cover the grates at the rear of BeFREE*.
- Be careful with liquids around the BeFREE (and the external power supply). BeFREE is not waterproof.
- This is a Class A product. In a domestic environment this product may cause radio interference in which case the user may be required to take adequate measures
- The unit shall be supplied from external power supply which complies with clause 2.5 of standard IEC 60950-1:2005 (2nd ed.), requirements for Limited power source.

*operating ambient temperature range of BeFREE and power supply is 5°C to 35°C