

Getting Started
with

Speakerbox



1



2



3



Installing ChangeMe programming utility

4

Download ChangeMe. You can find it on:

www.tipro.net → support & documents

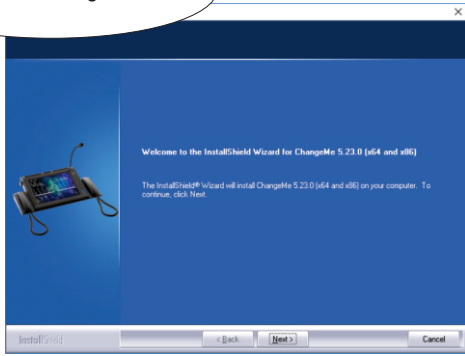


⚠ WARNING:

This is a Class A product. In a domestic environment this product may cause radio interference in which case the user may be required to take adequate measures.

5

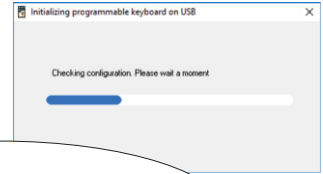
install ChangeMe



6



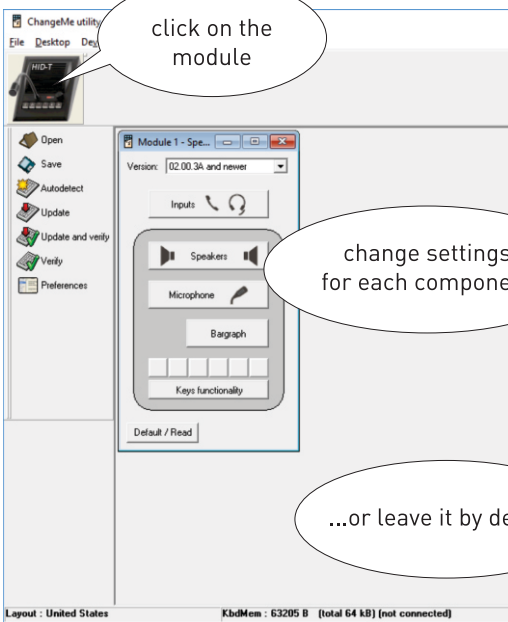
run
ChangeMe



your Speakerbox module will
be automatically detected

7

click on the
module



8

when finished,
save the
contents to a file



9

and program it
to the Speakerbox!

