

# Getting Started with **BeFREE 22**



1

connect the power supply

guide the cable(s)  
through the cable canal

First install operating system.

Then install drivers for BeFREE 22. You can find them on:

[www.tipro.net](http://www.tipro.net) → support & documents



2

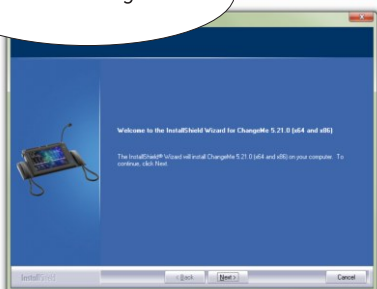
press the ON button

4

calibrate the touch screen

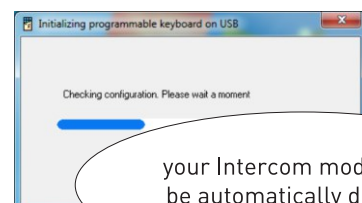
5

install ChangeMe



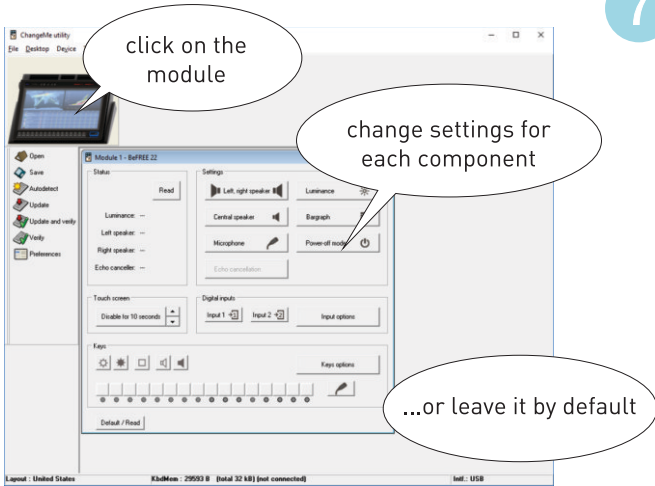
6

optionally run ChangeMe to  
change settings for each Tipro module

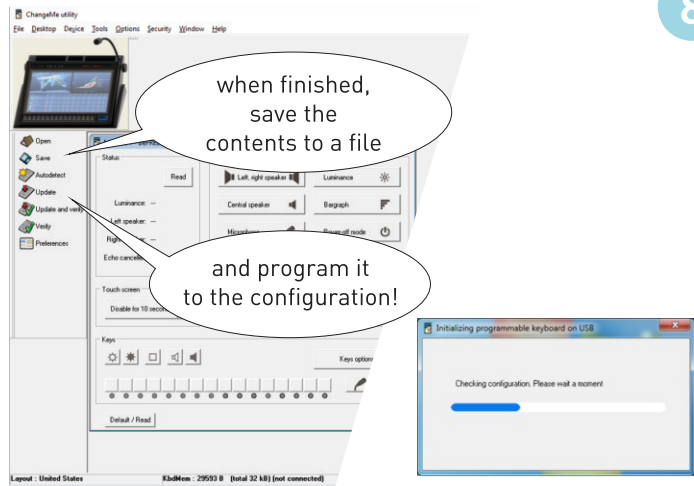


your Intercom module will  
be automatically detected

7

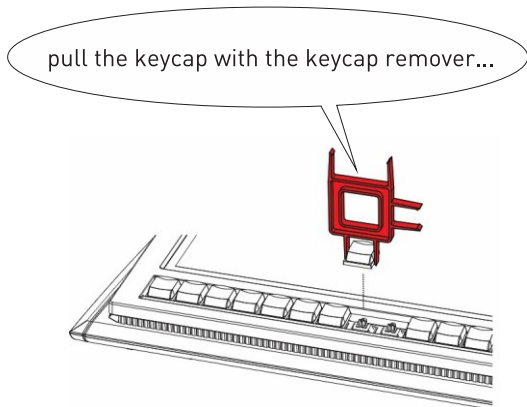


8

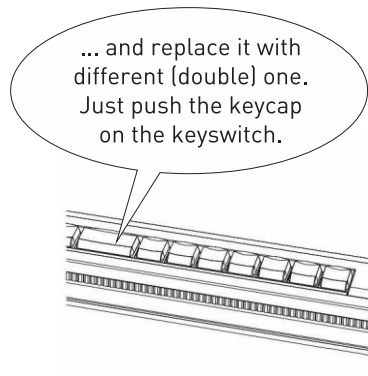


optional: replacing the keycaps

9

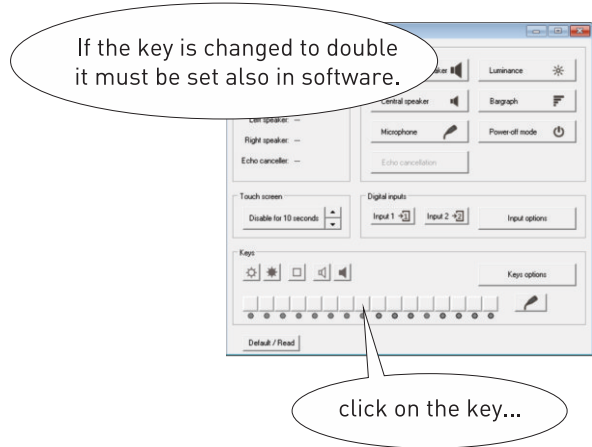


10



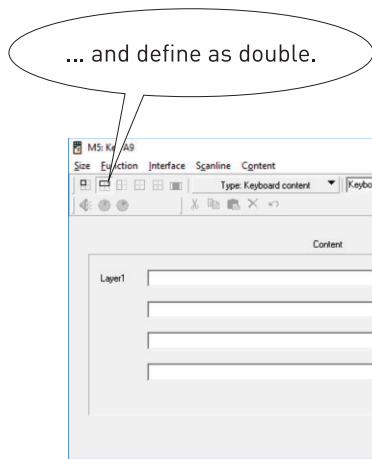
double keycap is incompatible with PTT, so one can't be swapped with the other

11



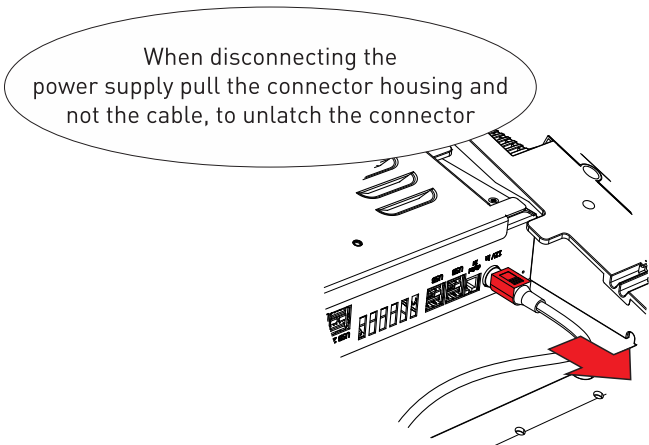
If the key is changed to double it must be set also in software.

12



... and define as double.

13



When disconnecting the power supply pull the connector housing and not the cable, to unlatch the connector

### ⚠ WARNINGS

- Place the external power supply on a dry place with enough air circulation\*.
- Do not cover the grates at the rear of BeFREE\*.
- Be careful with liquids around the BeFREE (and the external power supply). BeFREE is not waterproof.
- This is a Class A product. In a domestic environment this product may cause radio interference in which case the user may be required to take adequate measures
- The unit shall be supplied from external power supply which complies with clause 2.5 of standard IEC 60950-1:2005 (2nd ed.), requirements for Limited power source.

\*operating ambient temperature range of BeFREE and power supply is 5°C to 35°C